

Bio12-Q4W1-Ch.32-Skeletal and Muscles-Test.

Matching

Match each item with the correct statement below.

- | | |
|--------------|---------------|
| a. myofibril | f. bursa |
| b. joint | g. melanin |
| c. keratin | h. osteoblast |
| d. marrow | i. ligament |
| e. sarcomere | |

- _____ 1. Band of tissue connecting bone to bone
- _____ 2. Protein in dead epidermal cells that protects and waterproofs underlying cells
- _____ 3. Where two or more bones meet
- _____ 4. Smaller fiber in a muscle fiber
- _____ 5. Soft tissue that fills center cavities of bones
- _____ 6. Cell pigment that colors skin and protects it from solar radiation
- _____ 7. One of the functional units of a myofibril
- _____ 8. Potential bone cell found in cartilage of embryo
- _____ 9. Fluid-filled sac between bones

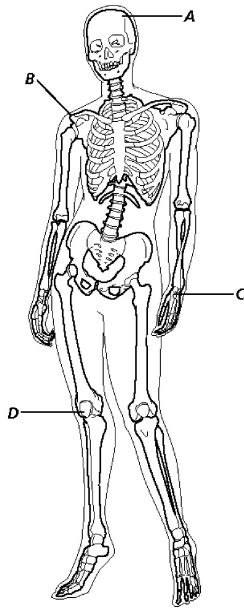
Multiple Choice

Identify the choice that best completes the statement or answers the question.

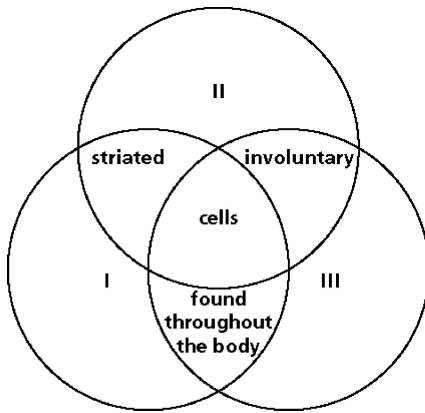
- _____ 10. _____-degree burns involve the death of epidermal and dermal cells/layers.

a. Fourth	c. Second
b. First	d. Third
- _____ 11. Which of the following examples illustrates a pivot joint in use?

a. You look behind you.	c. You wave good-bye to a friend.
b. You wind up to pitch a baseball.	d. You kick a football.

**Figure 34-3**

- _____ 12. Which joints in Figure 34-3 do not move?
- | | |
|------|------|
| a. B | c. C |
| b. D | d. A |
- _____ 13. Identify the ball-and-socket joints in Figure 34-3.
- | | |
|------|------|
| a. D | c. B |
| b. C | d. A |
- _____ 14. Which area shown in Figure 34-3 is not involved in the production of blood cells?
- | | |
|------|------|
| a. C | c. D |
| b. B | d. A |
- _____ 15. Which type of muscle is found in internal organs?
- | | |
|-------------|--------------|
| a. striated | c. skeletal |
| b. smooth | d. voluntary |
- _____ 16. The first reaction of the body to a cut is to restore the continuity of the _____.
- | | |
|-----------------|------------------|
| a. sweat glands | c. capillaries |
| b. skin | d. none of these |
- _____ 17. A(n) _____ muscle contracts under unconscious control.
- | | |
|--------------|----------------|
| a. voluntary | c. involuntary |
| b. striated | d. skeletal |
- _____ 18. What is an effect of aging on the skin?
- | | |
|------------|-----------------|
| a. sagging | c. wrinkles |
| b. dryness | d. all of these |

**Figure 34-4**

- ____ 19. Which type of muscle is labeled I in the Venn diagram shown in Figure 34-4?
- a. cardiac
 - b. skeletal
 - c. filament
 - d. smooth
- ____ 20. Which type of muscle is labeled III in the Venn diagram shown in Figure 34-4?
- a. smooth
 - b. cardiac
 - c. skeletal
 - d. filament
- ____ 21. Which type of muscle is labeled II in the Venn diagram shown in Figure 34-4?
- a. skeletal
 - b. smooth
 - c. cardiac
 - d. filament
- ____ 22. The skin regulates the temperature of the body on a hot day by ____.
- a. reducing access to the exterior
 - b. closing the pores
 - c. dilating blood vessels
 - d. constricting the blood
- ____ 23. By age 20, a person's bones stop growing because ____.
- a. less calcium is present in the body
 - b. bone cells receive less oxygen and nutrients at that time
 - c. hormones cause the growth centers at the ends of bones to degenerate
 - d. bone-forming cells are no longer present

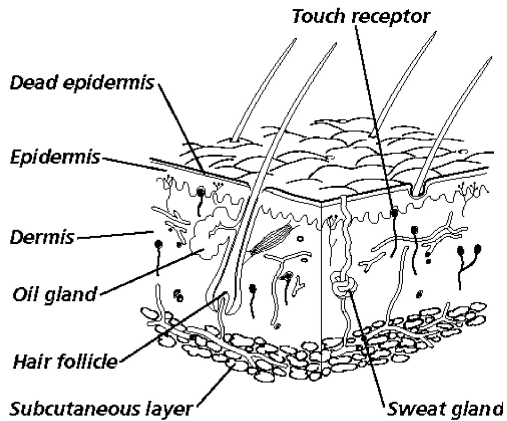


Figure 34-2

- _____ 24. Which portion of skin shown in Figure 34-2 changes when you get a suntan?
- | | |
|-----------------------|-------------------|
| a. dermis | c. dead epidermis |
| b. subcutaneous layer | d. epidermis |
- _____ 25. Which portion of skin shown in Figure 34-2 contains sense receptors?
- | | |
|-----------------------|-------------------|
| a. dermis | c. epidermis |
| b. subcutaneous layer | d. dead epidermis |
- _____ 26. Which portion of skin shown in Figure 34-2 is where a pimple forms?
- | | |
|-----------------------|------------------|
| a. subcutaneous layer | c. hair follicle |
| b. sweat gland | d. oil gland |
- _____ 27. After suffering widespread third-degree burns, the burn victim _____.
- | |
|--|
| a. has a harder time regulating body temperature |
| b. has slight damage to cells of the dermis |
| c. is unlikely to incur bacterial infection |
| d. recovers in a short time |
- _____ 28. Which type of muscle makes up the heart?
- | | |
|------------|-----------------|
| a. smooth | c. skeletal |
| b. cardiac | d. all of these |
- _____ 29. Contractions of _____ muscle are slow and prolonged.
- | | |
|--------------|-----------------|
| a. voluntary | c. smooth |
| b. skeletal | d. all of these |

=====