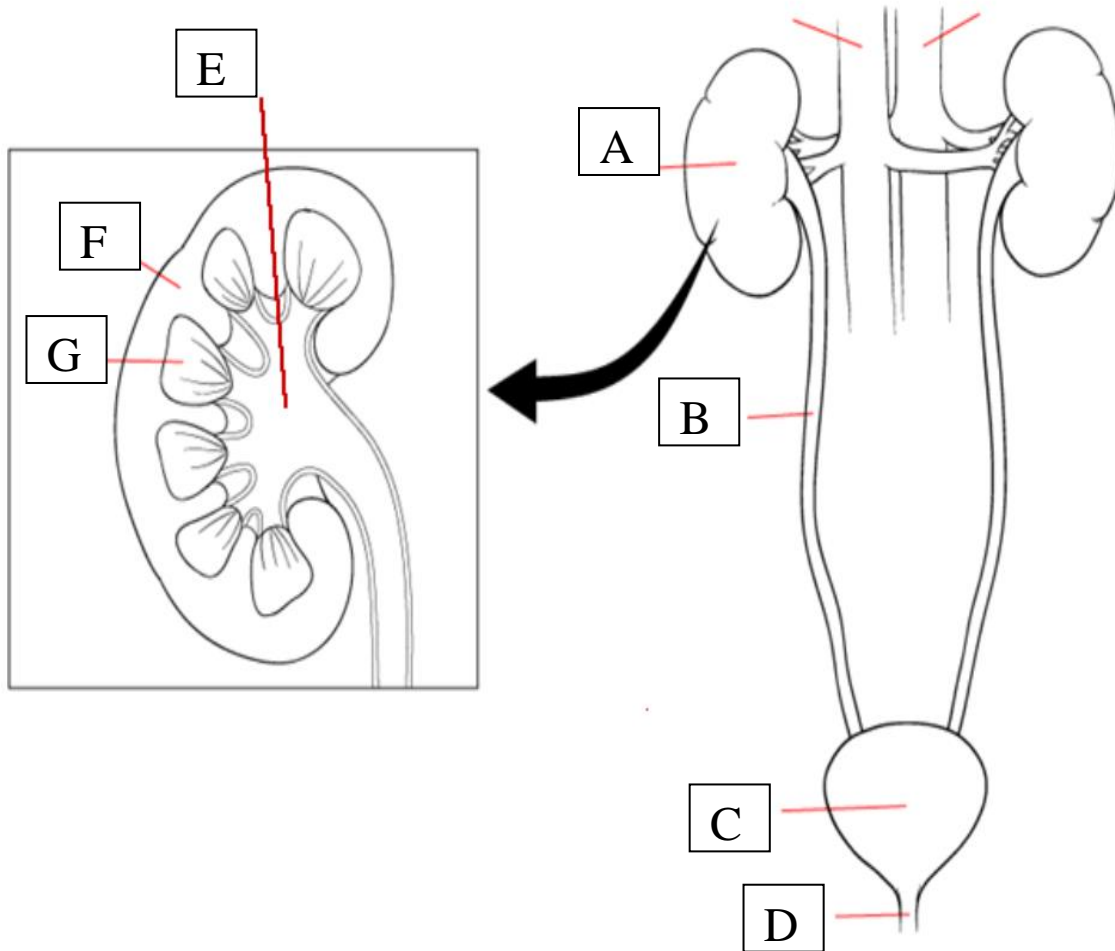


Bio-10- Excretory System -Test

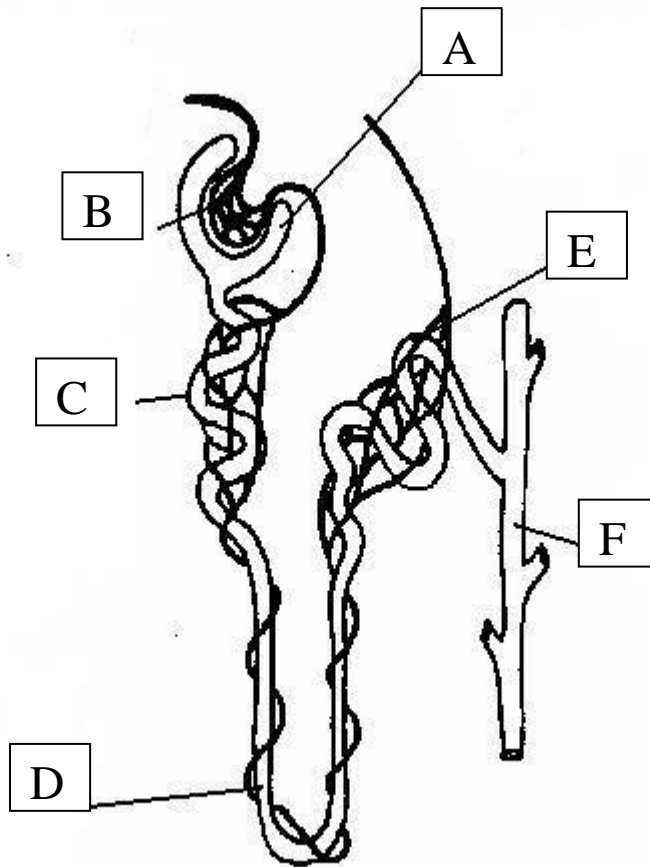
* Match the following labels to the diagram below



Match the label with these words:

1. bladder,
2. urethra,
3. kidney,
4. ureters,
5. renal pelvis
6. one of two ducts where urine travels to the bladder
7. a muscular bag that holds urine
8. one of a pair of bean- shaped organs that filter the blood
9. a duct from the bladder which takes urine out of the body
10. a place where urine is stored before it is out.

* Match the following labels to the diagram below



- 11. collecting duct;
- 12. branch of renal artery;
- 13. loop of Henle;
- 14. distal convoluted tubule;
- 15. glomerulus;
- 16. proximal convoluted tubule;
- 17. Bowman's capsule
- 18. a part of circulatory system in the kidneys
- 19. the place where most water is reabsorbed
- 20. Antidiuretic hormone works here

* Match

- A. collecting duct;
- B. loop of Henle;
- C. distal convoluted tubule;
- D. glomerulus;
- E. proximal convoluted tubule;
- F. renal artery;
- G. Bowman's capsule;
- H. Antidiuretic hormone or ADH.
- I. Urine
- J. Urea and uric acid
- K. serum

- 21. a part of circulatory system in the kidneys
- 22. The hormone that is involved in producing concentrated urine
- 23. Cup shaped structure through which the fluid part of the blood is filtered
- 24. Where the majority of water is reabsorbed into the body again.
- 25. Looped portion of the tubule. Important for helping concentrate the urine
- 26. Tuft of capillaries carrying high pressure blood
- 27. two toxic nitrogenous wastes that your kidneys constantly remove from your bloodstream.
- 28. A filtering unit in the kidney
- 29. Fine capillaries inside the kidneys
- 30. Solution of body wastes consisting of excess water, waste molecules, and excess ions

=====