

Bio-10-Q3W2-Worms-Moluscks-Test

Multiple Choice

Identify the choice that best completes the statement or answers the question.

- ____ 1. A group of cnidarians that provide food and shelter for many kinds of animals are the ____.
- a. corals
 - b. hydras
 - c. sea anemones
 - d. jellyfishes

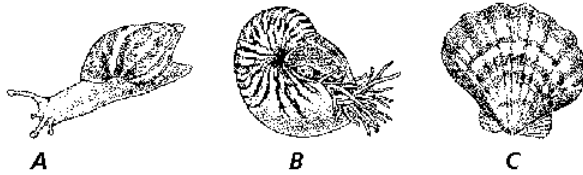


Figure 27-2

- ____ 2. Which shell shown in Figure 27-2 is from the most recently evolved organism?
- a. B
 - b. C
 - c. A
 - d. none of them
- ____ 3. Which shell shown in Figure 27-2 came from a stomach-footed mollusk?
- a. A
 - b. B
 - c. C
 - d. none of them
- ____ 4. Which shell shown in Figure 27-2 came from a mollusk that uses jellyfish nematocysts for protection?
- a. B
 - b. C
 - c. A
 - d. none of them
- ____ 5. Which shell shown in Figure 27-2 is from a bivalve?
- a. B
 - b. C
 - c. A
 - d. none of them

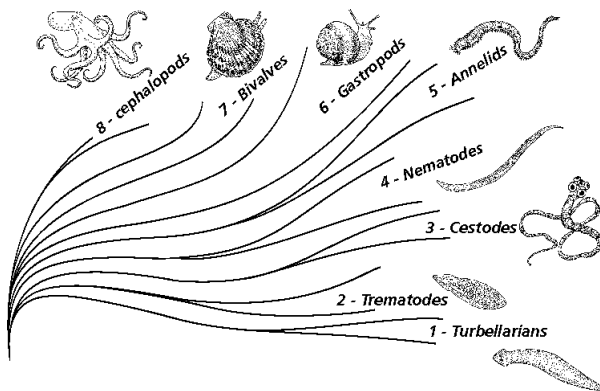


Figure 27-5

- ____ 6. According to Figure 27-5, which phylum evolved first?
- a. planaria
 - b. annelids
 - c. bivalves
 - d. nematodes
- ____ 7. According to Figure 27-5, which phylum are annelids closest to on an evolutionary scale?
- a. bivalves
 - b. nematodes
 - c. cestodes
 - d. gastropods



-

Figure 26-3

13. How are the two organisms shown in Figure 26-3 different?
- a. A moves but B doesn't
 - b. A is a cnidarian and B is not
 - c. only B is poisonous
 - d. A is a medusa and B is a polyp colony

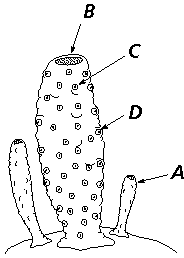


Figure 26-2

- ____ 14. Which structure shown in Figure 26-2 analogous to an anus?
- | | |
|------|------|
| a. A | c. D |
| b. B | d. C |
- ____ 15. In Figure 26-2, how did the structure labeled A develop?
- | | |
|---------------------------|-------------------------|
| a. asexually by budding | c. formation of gametes |
| b. fertilization by sperm | d. fragmentation |
- ____ 16. A Portuguese man-of-war is an example of ____.
- | | |
|-----------------------|-----------------------|
| a. a hydrozoan colony | c. a large scyphozoan |
| b. a sea anemone | d. an anthozoan |
- ____ 17. In a cnidarian, digestion occurs in the ____.
- | | |
|--------------------------|--------------------|
| a. tentacles | c. digestive tract |
| b. gastrovascular cavity | d. proglottids |
- ____ 18. Because sponges are sessile, they get their food through ____.
- | | |
|----------------------------|-----------------|
| a. scavenging the seafloor | c. the spicules |
| b. filter feeding | d. tentacles |

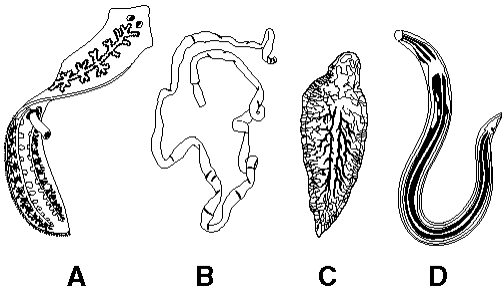


Figure 26-4

- ____ 19. Which organism shown in Figure 26-4 is of a phylum that can infect plants?
- | | |
|------|------|
| a. C | c. A |
| b. D | d. B |
- ____ 20. Which organism shown in Figure 26-4 is a parasite that requires two hosts?
- | | |
|------|------|
| a. B | c. A |
| b. C | d. D |
- ____ 21. Which organism shown in Figure 26-4 does not have hooks and suckers on its mouth?
- | | |
|------|------|
| a. A | c. D |
| b. C | d. B |

____ 22. What can be inferred from Figure 26-5?

Roundworm Infections

Number of Cases	Low Temperature	Day
300	60	1
295	58	5
290	55	10
320	51	15
303	55	20
295	45	25
15	25	30

Figure 26-5

- a. this species of roundworm does not flourish in warm weather
- b. this species of roundworm is widespread
- c. this species of roundworm becomes dormant in warm weather
- d. this species of roundworm cannot survive outside hosts at 25 degrees

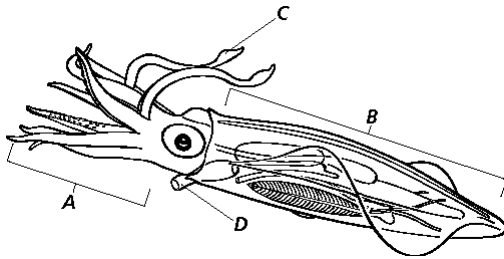


Figure 27-3

- ____ 23. Which part of the squid shown in Figure 27-3 is analogous to a snail's shell?
 - a. A
 - b. B
 - c. D
 - d. C
- ____ 24. Which part of the squid shown in Figure 27-3 is the foot?
 - a. A
 - b. B
 - c. D
 - d. C
- ____ 25. Uncooked or undercooked pork may contain _____.
 - a. trichina worms
 - b. free-living roundworms
 - c. hookworms
 - d. pinworms
- ____ 26. Nematocysts discharge when _____.
 - a. a cnidarian regenerates
 - b. salt concentration in the ocean drops
 - c. cnidarians reproduce
 - d. tentacles touch a source of food

Matching

Match each item with the correct statement(s) below.

- | | |
|-------------|--------------|
| a. leech | c. mollusk |
| b. fan worm | d. earthworm |

- _____ 27. burrows through soil providing aeration and fertilizer
- _____ 28. external parasite
- _____ 29. gizzard grinds organic matter
- _____ 30. mantle
- _____ 31. disturbances in water causes organism to withdraw inside tube
- _____ 32. muscular foot
- _____ 33. may eat only once every few months
- _____ 34. traps food in the mucus on its “fans”

=====