

Bio-10-Q3W2-Worms-Moluscks-H.W

Multiple Choice

Identify the choice that best completes the statement or answers the question.

- ____ 1. What can be inferred from Figure 26-5?

Roundworm Infections

Number of Cases	Low Temperature	Day
300	60	1
295	58	5
290	55	10
320	51	15
303	55	20
295	45	25
15	25	30

Figure 26-5

- a. this species of roundworm does not flourish in warm weather
b. this species of roundworm is widespread
c. this species of roundworm cannot survive outside hosts at 25 degrees
d. this species of roundworm becomes dormant in warm weather
- ____ 2. A group of cnidarians that provide food and shelter for many kinds of animals are the _____.
a. sea anemones
b. corals
c. hydras
d. jellyfishes
- ____ 3. A Portuguese man-of-war is an example of _____.
a. a sea anemone
b. an anthozoan
c. a hydrozoan colony
d. a large scyphozoan

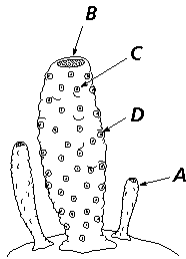


Figure 26-2

- ____ 4. In Figure 26-2, how did the structure labeled A develop?
a. fertilization by sperm
b. formation of gametes
c. fragmentation
d. asexually by budding
- ____ 5. Which structure shown in Figure 26-2 analogous to an anus?
a. D
b. B
c. C
d. A

- ___ 6. A ____ has a muscular tube called the pharynx, which can be extended outside its body to suck in food.
- planarian
 - jellyfish
 - sponge
 - tapeworm
- ___ 7. In a cnidarian, digestion occurs in the ____.
- digestive tract
 - proglottids
 - tentacles
 - gastrovascular cavity

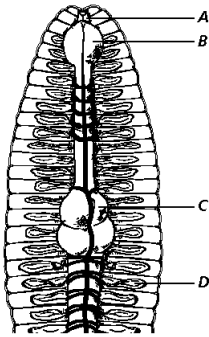


Figure 27-4

- ___ 8. In the earthworm shown in Figure 27-4, what part is analagous to the throat in humans?
- C
 - D
 - A
 - B
- ___ 9. In the earthworm shown in Figure 27-4, what part is analagous to the central nervous system in humans?
- D
 - A
 - B
 - C
- ___ 10. In the earthworm shown in Figure 27-4, what part is analagous to the kidneys in humans?
- C
 - B
 - A
 - D
- ___ 11. In the earthworm shown in Figure 27-4, what part is analagous to the stomach in humans?
- A
 - B
 - D
 - C

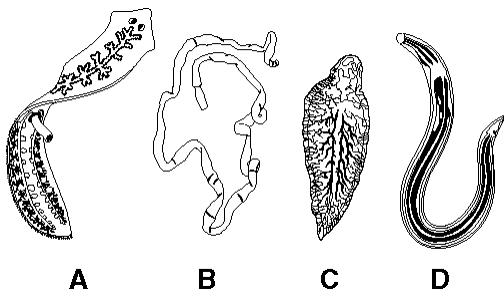


Figure 26-4

- ___ 12. Which organism shown in Figure 26-4 is a parasite that requires two hosts?
- B
 - D
 - C
 - A
- ___ 13. Which organism shown in Figure 26-4 does not have hooks and suckers on its mouth?
- B
 - A
 - D
 - C

- ____ 14. Which organism shown in Figure 26-4 is of a phylum that can infect plants?
- | | |
|------|------|
| a. B | c. D |
| b. C | d. A |

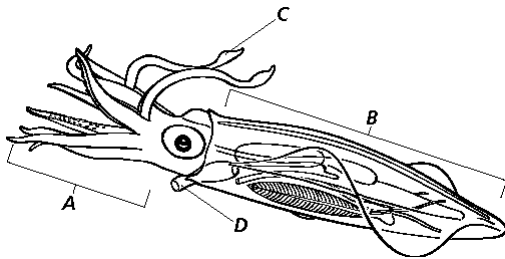


Figure 27-3

- ____ 15. Which part of the squid shown in Figure 27-3 is the foot?
- | | |
|------|------|
| a. D | c. C |
| b. A | d. B |
- ____ 16. Which part of the squid shown in Figure 27-3 is analogous to a snail's shell?
- | | |
|------|------|
| a. B | c. D |
| b. A | d. C |

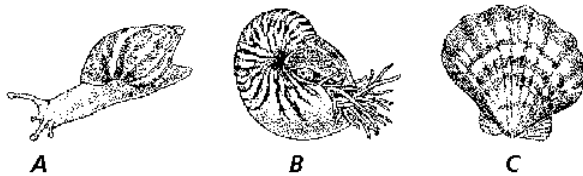


Figure 27-2

- ____ 17. Which shell shown in Figure 27-2 is from the most recently evolved organism?
- | | |
|------|-----------------|
| a. A | c. C |
| b. B | d. none of them |
- ____ 18. Which shell shown in Figure 27-2 came from a mollusk that uses jellyfish nematocysts for protection?
- | | |
|------|-----------------|
| a. B | c. C |
| b. A | d. none of them |
- ____ 19. Which shell shown in Figure 27-2 is from a bivalve?
- | | |
|------|-----------------|
| a. A | c. B |
| b. C | d. none of them |
- ____ 20. Which shell shown in Figure 27-2 came from a stomach-footed mollusk?
- | | |
|------|-----------------|
| a. C | c. B |
| b. A | d. none of them |
- ____ 21. Uncooked or undercooked pork may contain ____.
- | | |
|--------------|---------------------------|
| a. hookworms | c. free-living roundworms |
| b. pinworms | d. trichina worms |

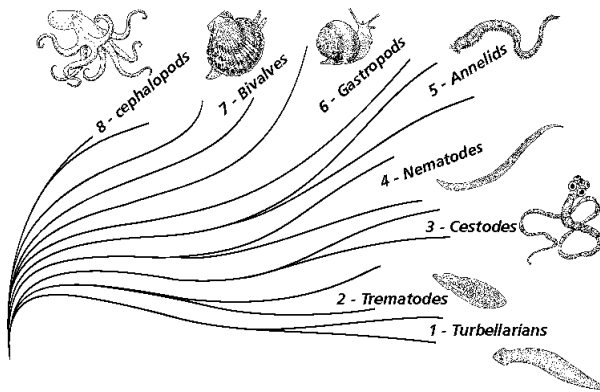


Figure 27-5

- ____ 22. According to Figure 27-5, which phylum evolved first?
- bivalves
 - planaria
 - nematodes
 - annelids
- ____ 23. According to Figure 27-5, which phylum are annelids closest to on an evolutionary scale?
- bivalves
 - gastropods
 - nematodes
 - cestodes

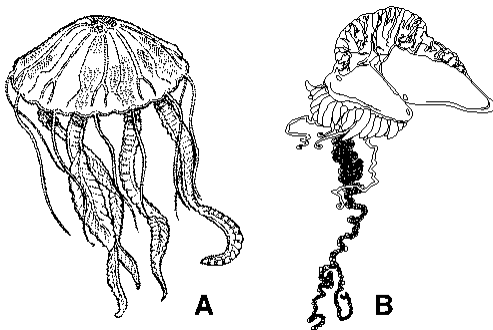


Figure 26-3

- ____ 24. How are the two organisms shown in Figure 26-3 different?
- A is a cnidarian and B is not
 - A moves but B doesn't
 - only B is poisonous
 - A is a medusa and B is a polyp colony
- ____ 25. Nematocysts discharge when ____.
- salt concentration in the ocean drops
 - tentacles touch a source of food
 - cnidarians reproduce
 - a cnidarian regenerates
- ____ 26. Because sponges are sessile, they get their food through ____.
- scavenging the seafloor
 - filter feeding
 - the spicules
 - tentacles

Matching

Match each item with the correct statement(s) below.

- | | |
|-------------|--------------|
| a. leech | c. mollusk |
| b. fan worm | d. earthworm |

- ___ 27. burrows through soil providing aeration and fertilizer
- ___ 28. external parasite
- ___ 29. traps food in the mucus on its “fans”
- ___ 30. mantle
- ___ 31. gizzard grinds organic matter
- ___ 32. muscular foot
- ___ 33. disturbances in water causes organism to withdraw inside tube
- ___ 34. may eat only once every few months

Modified True/False

Indicate whether the statement is true or false. If false, change the identified word or phrase to make the statement true.

- ___ 35. The respiratory organs in aquatic gastropods are primitive lungs. _____
- ___ 36. Earthworms are hermaphrodites because each worm produces both eggs and sperm.

- ___ 37. All roundworms are parasites. _____
- ___ 38. Gastropods have two shells. _____
- ___ 39. Hookworms can be contracted by eating improperly cooked infected pork. _____
- ___ 40. Roundworms are have one body opening. _____
- ___ 41. Bivalves obtain food by predation. _____
- ___ 42. The most complex and most recently evolved mollusks are gastropods. _____
- ___ 43. Trichinella can be ingested in raw or undercooked pork. _____
- ___ 44. Pinworms are the most common parasites in children living in the United States.

- ___ 45. In shelled mollusks, the radula secretes the shell. _____

=====