

Bio10-Q2W5-Test.2-Protista

Multiple Choice

Identify the choice that best completes the statement or answers the question.

- ____ 1. When diatoms that have been reproducing asexually reach about one-fourth of their original size, they
- triple in size.
 - die.
 - reproduce sexually.
 - all of these.

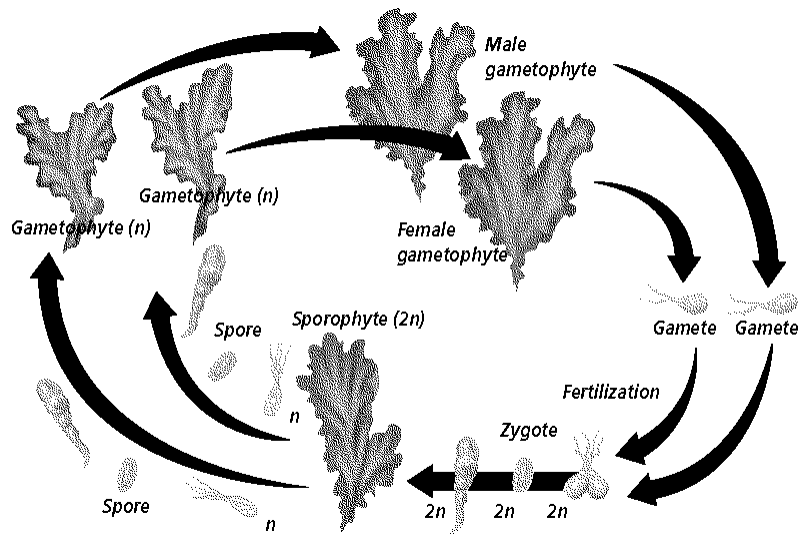


Figure 19-4

- ____ 2. When does meiosis occur in Figure 19-4?
- when the spores form
 - when the gametes form
 - when the male and female gametophytes form
 - when the zygotes form
- ____ 3. Which phase shown in Figure 19-4 is diploid?
- from the spore to the gametophyte
 - male and female gametophytes
 - from the zygote to the sporophyte
 - gametophyte
- ____ 4. When does mitosis occur in Figure 19-4?
- any time there is cellular growth
 - only as spores grow into gametophytes
 - only as the zygote forms
 - only when the male and female gametophytes make the gametes
- ____ 5. During the gametophyte generation, a green alga ____.
- reproduces asexually
 - has the haploid number of chromosomes
 - has the diploid number of chromosomes
 - develops from a zygote

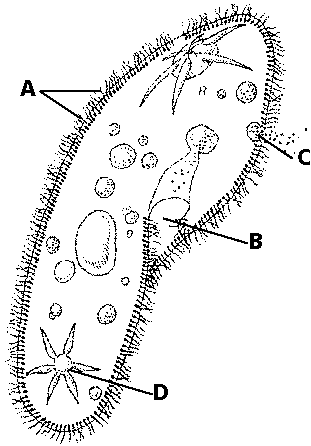


Figure 19-2

- ___ 6. Which structure shown in Figure 19-2 is used for locomotion?
- | | |
|------|------|
| a. A | c. B |
| b. D | d. C |
- ___ 7. Which structure shown in Figure 19-2 is used to extract waste?
- | | |
|------|------|
| a. A | c. C |
| b. D | d. B |
- ___ 8. Which structure shown in Figure 19-2 is used to eat?
- | | |
|------|------|
| a. C | c. D |
| b. A | d. B |
- ___ 9. Downy mildews and water molds are similar to fungi in that they both ____.
- | | |
|--------------------------------|---------------------|
| a. resemble fungi | c. absorb nutrients |
| b. decompose organic materials | d. all of these |
- ___ 10. The funguslike protists that produce a multinucleate glob of cytoplasm are the ____.
- | | |
|---------------------------|-------------------------|
| a. plasmodial slime molds | c. cellular slime molds |
| b. downy mildews | d. water molds |
- ___ 11. An amoeba engulfs food by ____.
- | | |
|--|--|
| a. osmosis | |
| b. surrounding the food with pseudopodia | |
| c. using its oral groove and the action of cilia | |
| d. forming cysts | |
- ___ 12. Downy mildews are important because they may cause serious ____.
- | | |
|---------------------|--------------------|
| a. plant diseases | c. animal diseases |
| b. protist declines | d. all of these |
- ___ 13. The plantlike protists with delicate shells that make up a large proportion of the phytoplankton in freshwater ecosystems are ____.
- | | |
|---------------|--------------------|
| a. sporozoans | c. dinoflagellates |
| b. diatoms | d. green algae |
- ___ 14. Dinoflagellates are unicellular algae that
- | | |
|---------------------------------|----------------------|
| a. have two flagella. | c. create red tides. |
| b. have thick cellulose plates. | d. all of these. |

- _____ 15. Dinoflagellates are able to spin by means of _____.
 a. a pillbox shell that opens and closes
 b. a holdfast that attaches them to a rock
 c. the cilia that emerge through their pellicle
 d. two flagella at right angles to each other
- _____ 16. Red algae are a kind of seaweed having pigments that absorb green, violet, and blue light waves, which allows the algae to
 a. photosynthesize in limited light.
 b. live only in freshwater.
 c. live only in salt water.
 d. both a and b.

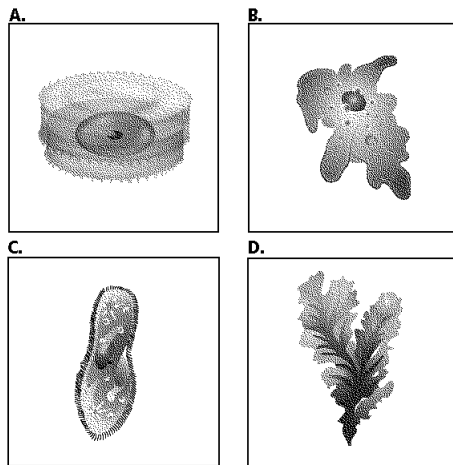


Figure 19-3

- _____ 17. Which of the protists shown in Figure 19-3 has the hardest exterior?
 a. A
 b. C
 c. B
 d. D
- _____ 18. Which of the protists shown in Figure 19-3 would use a pseudopod?
 a. C
 b. B
 c. A
 d. D
- _____ 19. Slime molds are said to be like animals during much of their life cycle because they _____.
 a. grow on rotting leaves or tree stumps
 b. look like animals
 c. move about and engulf food
 d. reproduce by making spores
- _____ 20. Which protist group produces much of the oxygen on Earth?
 a. slime molds
 b. algae
 c. diatoms
 d. water molds
- _____ 21. Members of the Kingdom Protista have _____.
 a. a wide variety of sizes and shapes
 b. membrane-bound organelles
 c. one or many cells
 d. all of these
- _____ 22. Many protozoans are classified according to _____.
 a. their method of reproduction
 b. their habitats
 c. the way that they move
 d. their method of waste removal
- _____ 23. Most sporozoans reproduce by _____.
 a. sexual reproduction only
 b. fragmentation
 c. conjugation
 d. both sexual and asexual reproduction

- ____ 24. The air bladders of brown algae allow the algae to
a. breathe. c. float near the water's surface.
b. reproduce. d. live in salt water.
- ____ 25. A protozoan that moves by lashing one or more of its whiplike parts is a(n) _____.
a. thallus c. flagellate
b. water mold d. sporozoan
- ____ 26. The plantlike protists that are the cause of red tides are _____.
a. dinoflagellates c. blue-green algae
b. brown algae d. red algae
- ____ 27. A green alga that forms colonies is
a. Ulva. c. Chlamydomonas.
b. Volvox. d. Spirogyra.
- ____ 28. Economically important members of the phylum Oomycota include _____.
a. plasmodial slime molds c. water molds
b. cellular slime molds d. all of these

=====