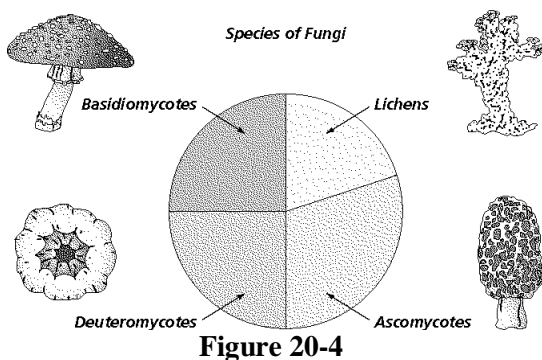


Bio-10-Q2W6-Test1.-Fungi

Multiple Choice

Identify the choice that best completes the statement or answers the question.

- ____ 1. The bread mold, Rhizopus, produces sexual zygospores when ____.
- there is moist food
 - rhizoids are present
 - environmental conditions are favorable
 - environmental conditions are unfavorable
- ____ 2. In hyphae divided by septa, cytoplasm flows from one cell to the next through ____.
- haustoria
 - chitin
 - spores
 - pores



- ____ 3. According to Figure 20-4, which type of fungi has the most species?
- lichens
 - basidiomycotes
 - ascomycotes
 - deuteromycotes
- ____ 4. Mushrooms, which are basidiomycotes, make up what percentage of the fungi species, according to Figure 20-4?
- 4%
 - 25%
 - 50%
 - 20%

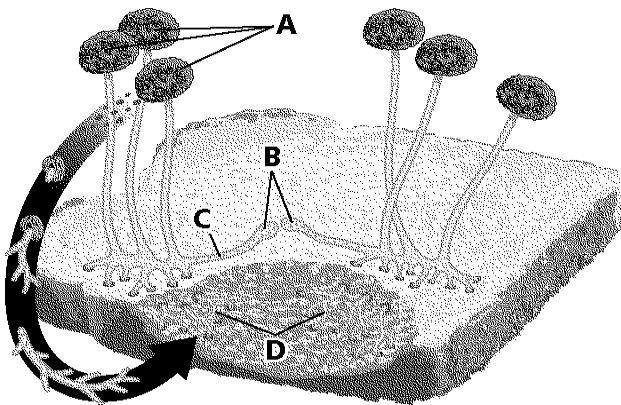


Figure 20-2

- ___ 5. In Figure 20-2, which structures gather nutrients?
 a. A c. D
 b. C d. B
- ___ 6. In Figure 20-2, where will sexual reproduction happen?
 a. D c. C
 b. A d. B
- ___ 7. In Figure 20-2, where are spores formed?
 a. C c. D
 b. A d. B
- ___ 8. In Figure 20-2, what would cause a zygospore to form at B?
 a. an overabundance of food c. moisture
 b. unfavorable environmental conditions d. heat
- ___ 9. In Figure 20-2, which structure acts as an anchor?
 a. A c. D
 b. B d. C

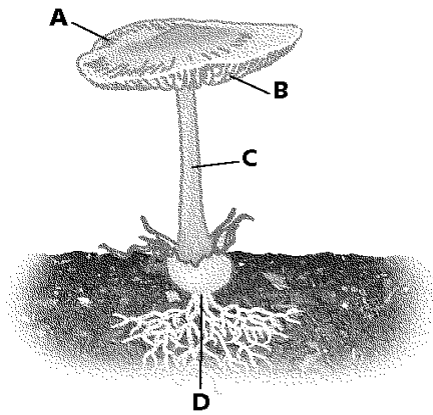


Figure 20-3

- ___ 10. Where does meiosis in the organism shown in Figure 20-3?
 a. D c. B
 b. A d. C
- ___ 11. Where are spores released in the organism shown in Figure 20-3?
 a. B c. D
 b. A d. C
- ___ 12. Fungi that transform complex organic substances into raw materials that other organisms can use are _____.
 a. mutualists c. parasites
 b. autotrophs d. decomposers
- ___ 13. Fossils of fungi are rare due to _____.
 a. their lack of species diversity
 b. their late appearance on the Geologic Time Scale
 c. their composition of soft materials
 d. their ability to form protective zygospores
- ___ 14. One criterion for classifying fungi is by how they _____.
 a. reproduce c. form symbiotic relationships
 b. recycle nutrients d. obtain their food

Matching

Match each item with the correct statement below.

- | | |
|----------------|-------------------|
| a. lichen | f. stolons |
| b. chitin | g. sporangium |
| c. gametangium | h. zygosporangium |
| d. haustoria | i. ascospore |
| e. mycorrhiza | j. ascus |

- ____ 15. complex carbohydrate in the cell walls of fungi
- ____ 16. thick-walled spores adapted to withstand unfavorable conditions
- ____ 17. case in which asexual spores are produced
- ____ 18. spore produced by sac fungi
- ____ 19. symbiotic association between a fungus and a green alga or cyanobacterium
- ____ 20. hyphae that grow horizontally along the surface of a food source
- ____ 21. saclike structure in which sexual spores develop in some fungi
- ____ 22. symbiotic association in which a fungus lives in close contact with the roots of a plant partner
- ____ 23. in parasitic fungi, specialized hyphae that penetrate cells and absorb nutrients
- ____ 24. in zygomycetes, the haploid structure in which gametes are produced

Match each item with the correct statement below.

- | | |
|-----------------------|--------------------|
| a. basidiomycetes | e. pioneer species |
| b. mycorrhizae | f. deuteromycetes |
| c. alga | g. penicillin |
| d. <i>Penicillium</i> | h. plant |

- ____ 25. make up a division of fungi that have no known sexual stage.
- ____ 26. is an antibiotic produced by a deuteromycote.
- ____ 27. A mycorrhiza is a mutualistic relationship between a fungus and a(n) ____.
- ____ 28. Lichens are ____ in all parts of the world.
- ____ 29. Plants that have ____ associated with their roots grow larger.
- ____ 30. is an example of a deuteromycote.
- ____ 31. Scientists think that ascomycetes and ____ evolved from a common ancestor.
- ____ 32. A lichen is a mutualistic relationship between a fungus and a(n) ____ or cyanobacterium.

True/False

Indicate whether the statement is true or false.

- ____ 33. Bread mold is able to penetrate the bread by means of zygospores. _____
- ____ 34. During asexual reproduction, ascomycetes produce ascospores. _____
- ____ 35. Mushrooms are examples of club fungi. _____
- ____ 36. Mycorrhizae increase the reproductive surface of plant roots. _____
- ____ 37. A lichen is the result of a mutual relationship between a fungus and an algae or cyanobacteria. _____
- ____ 38. No fungus contains chlorophyll in its hyphal cells. _____
- ____ 39. Zygospores are found in saclike structures produced by specialized hyphae. _____
- ____ 40. All fungi have cell walls made of cellulose. _____
- =====