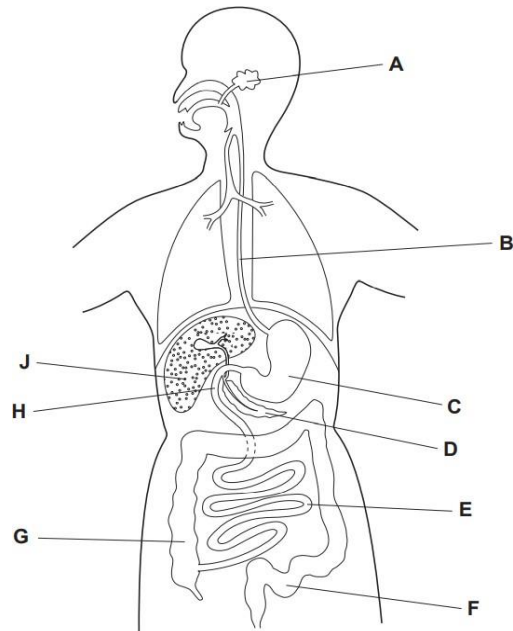
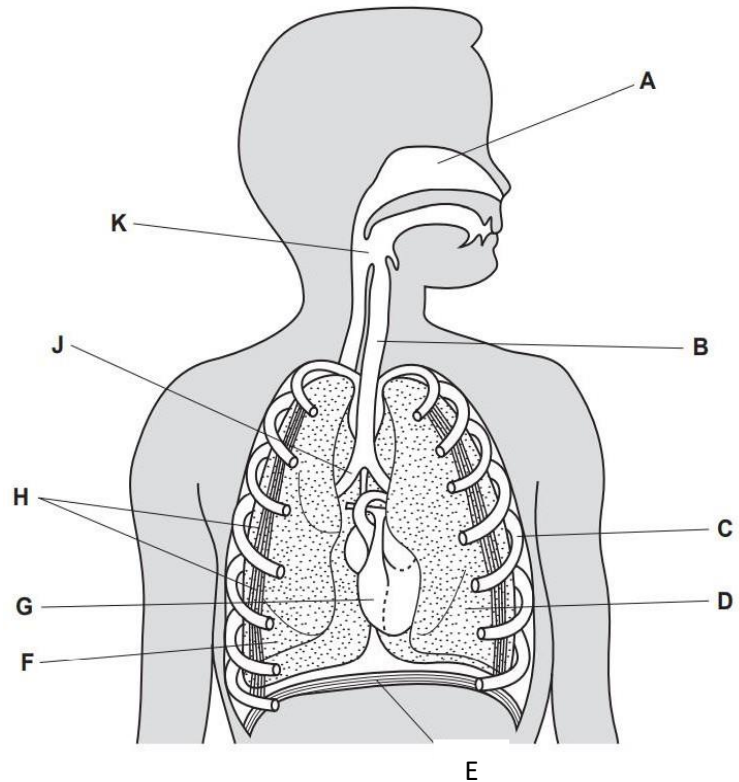


Paper 2



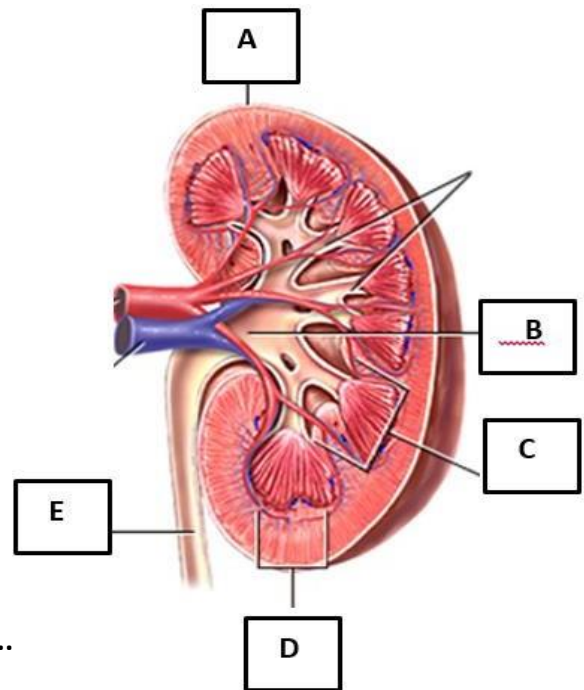
1. Peristalsis towards the stomach -----B
2. Large sac that stores food and protein digestion -----C
3. insulin production -----D
4. deamination -----J
5. partially digested food is mixed with bile -----H
6. most water is reabsorbed -----E
7. The place where most absorption of the food takes place -----E
8. Location of pepsinogen secretion and conversion to active pepsin. -----C
9. Location of deamination for protein. -----J
10. Place where feces are stored temporarily -----F



Complete:

11. left lung -----D
12. bronchus -----J
13. diaphragm -----E
14. intercostal muscle -----H
15. rib -----C
16. trachea -----B
17. The functional building unit of the lung is called
A. Nephron B. Neuron **C. Alveoli** D. Neon
18. filters out dust, warms and moistens air.
A. Trachea **B. Nose** C. Bronchus D. Bronchioles
19. is a cartilage which prevents the food from entering the trachea.
A. C-shaped B. **Epiglottis** C. Sternum D. Nasal
20. The pressure inside the lungs -----with the mechanism of exhalation.
A. Increases B. Decreases

21. Kidney..... **A**
22. Renal pelvis...**B**
23. Medulla.....**C**
24. Cortex.....**D**
25. Ureter.....**E**...



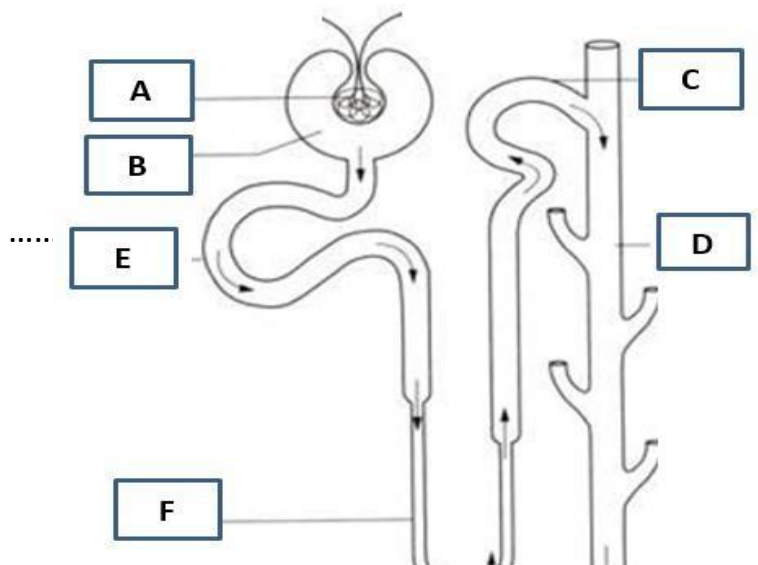
26. The functional building unit of the kidney is

- A. **Nephron** B. Neuron C. Alveoli

27. ----- is a waste product released by anaerobic respiration in yeast.

- A. Fatty acid B. Amino acid C. Lactic acid D. **Alcohol**

28. Glomerulus.....**A**
29. Bowman's capsule.....**B**
30. Distal convoluted tubule.....**C**
31. Collecting duct.....**D**
32. Proximal convoluted tubule **E**.....
33. Loop of Henle.....**F**





- A. Deamination
- B. Kidneys
- C. Ureter
- D. Urethra
- E. Bladder
- F. Nephron
- G. Renal Pelvis
- H. Urinary bladder
- I. glomerulus
- J. immunosuppressant
- K. collecting duct
- L. loop of Henle

- 34. **--B-----** Removes toxic substances, waste products and urea from the blood with extra water as urine.
- 35. **-----D** extended from the urinary bladder for urine to pass out of it.
- 36. **----H-----** works as reservoir for storing urine temporarily.
- 37. **.....F--** is the functional building unit of the kidney.
- 38. **.....G--** is the cavity which leads to ureter.
- 39. **----I--** is a network of blood capillaries entering the Bowman's capsule
- 40. **----I--** A cup shaped structure, where filtration takes place
- 41. All nephrons end up with long tube called **----k-----** where content is transported to the pelvis.
- 42. To avoid tissue rejection in kidney transplantation the patient must be given **----J-----** Drugs.

=====